

Sew Little Time Quilting presents:

The Chugach Range

©2017 Colleen Granger - All Rights Reserved.

The Chugach Mountain Range of Alaska is the farthest north mountain range that makes up part of the Pacific Coast ranges of North America.

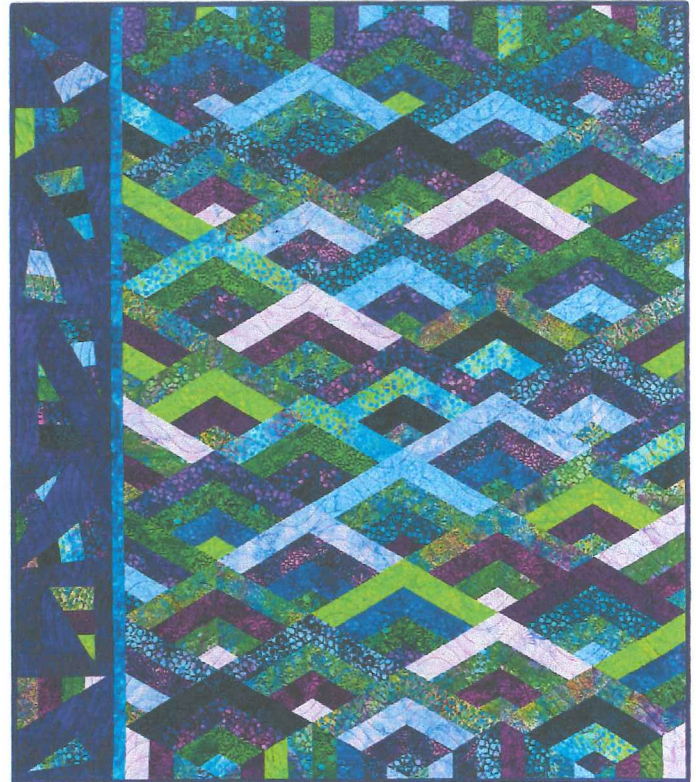
Fabric Requirements:(quilt minus border 46" x 64")

40 or 42 - 2 1/2" strips x width of fabric

**5/8 yard complimentary fabric for setting blocks

5/8 yard complimentary fabric for binding

**this may or may not be needed. It depends on the length of the strips and your setting choice.



What to bring to class:

Sewing Machine in good working order with a new needle and neutral thread. Don't forget your power cord and foot pedal.

Basic sewing supplies: pins, thread snips, scissors, etc. rotary cutter and cutting mat.

A 10" high or larger 60 degree triangle ruler.

A design wall or approximately 2 yards of 72" wide felt or flannel or whatever you want to use for a design wall.

All your fabric cut as specified above.

Don't forget your spirit of adventure!

If you have any questions or concerns please call me (Colleen) at 415-686-6067 or send an email to colleen@sewlittletimequilting.com

