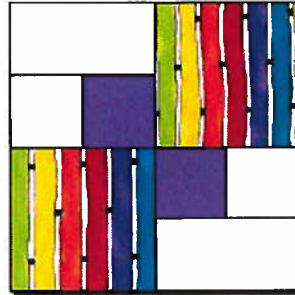


Tam's Patch



This makes an 8" block!

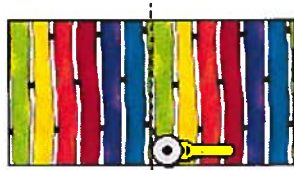
It's a Jeffrey Gutcheon design.
:o)



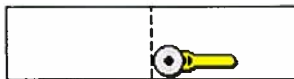
Please abide by the Terms and Conditions of use! :o)

5 blocks x 7 blocks would be a nice Project Linus Quilt!

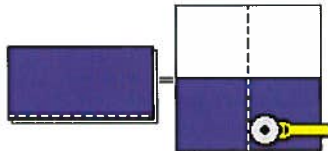
** Preparing the Pieces and Sewing the Block **



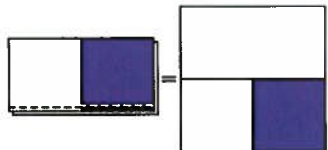
First cut the Color 1 4-1/2" x 9" strip into two 4-1/2" squares...



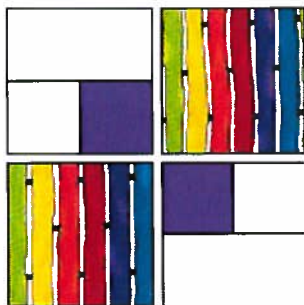
Next cut the Color 3 2-1/2" x 9" strip into two 2-1/2" x 4-1/2" rectangles...



Now sew the Color 2 and Color 3 2-1/2" x 5" strips right sides together along one long edge, using a scant 1/4" seam allowance. Press seam to the darker side. Cut this at the 2-1/2" point to make two pieced units...



Sew a Color 3 rectangle to the top of each pieced unit as shown at left...



Now lay out all units as shown at left. Sew two horizontal rows, and then join the rows to complete the block...Good Job!

...on to Page 2!

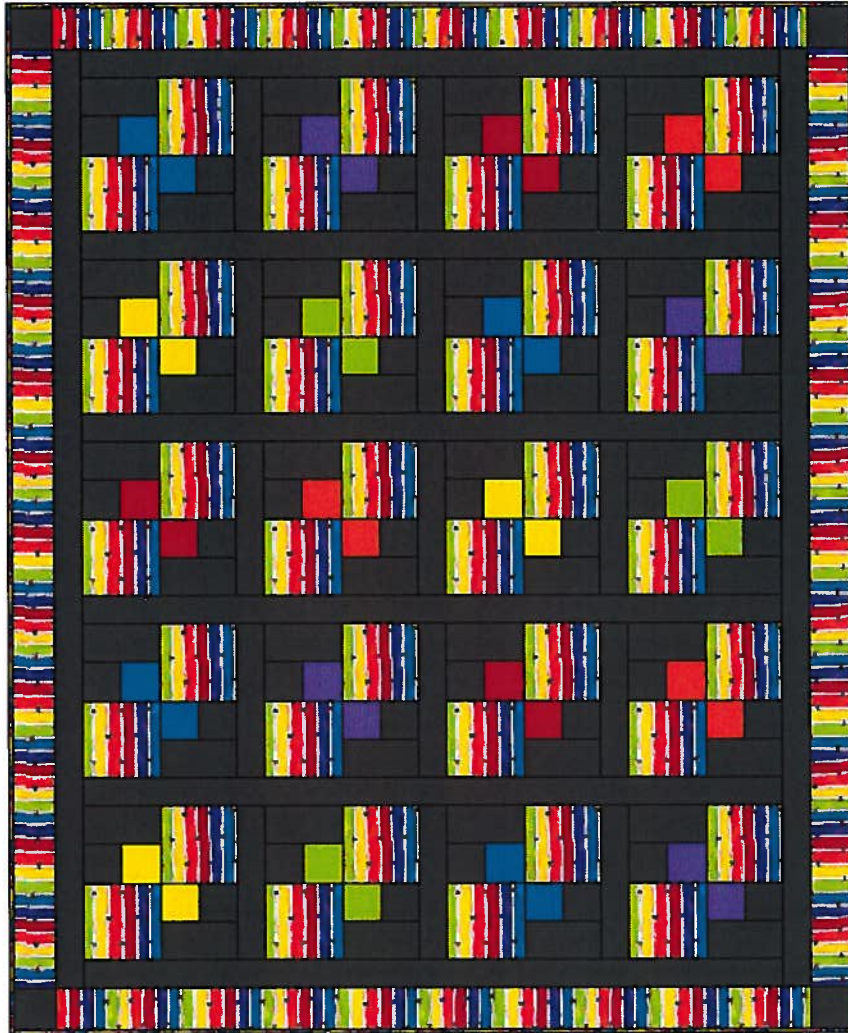
□ June 9 2006 Marcia Hohn

Traditional Block



<http://www.quilterscache.com>

Tam's Patch - Page 2



Here are four blocks by five with sashing rows between the blocks!

Happy Quilting Folks!

Marcia :o)

[Page 1](#)

[Here's Dessa's!](#)

[Cynthia's!](#)

**** Supplies List ****



1 Color Color 1 needs: one 4-1/2" x 9" strip



2 Color Color 2 needs: one 2-1/2" x 5" strip



3 Color Color 3 needs: one 2-1/2" x 9" strip AND one 2-1/2" x 5" strip

[To the Patterns](#) or [The Quilter's Cache](#)

□ June 9 2006 Marcia Hohn

Traditional Block



<http://www.quilterscache.com>