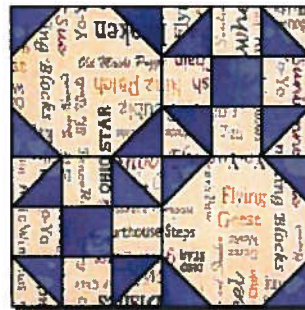


SNOWCHURN

This makes a 12" block!

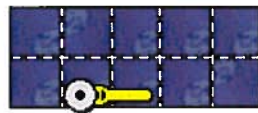
Oh MAN...This version of Churn Dash is a.k.a. Shoofly...why on earth didn't I name this Snow Shoo?? LOL!



3 Blocks x 6 Blocks with a 2" border makes a perfect Project Linus Quilt Sized Quilt!

Please abide by the [Terms and Conditions of use!](#) :o)

**** Preparing the Pieces and Sewing the Block ****



Start by cutting the Color 1 5" x 12-1/2" strip into ten 2-1/2" squares...



Then cut the Color 2 5" x 10" strip into eight 2-1/2" squares...



Next cut the Color 2 6-1/2" x 13" strip into two 6-1/2" squares...



Now speed piece the half squares, by stacking the Color 1 and Color 2 2-7/8" x 11-1/2" strips right sides together and all edges aligned. (I show them staggered here just so you can see what two pieces I am talking about) On the back of the top strip, lightly mark the 2-7/8" square lines and then mark in the diagonals in the directions shown at left. Now sew a SCANT 1/4" above and below the marked diagonals, pivoting at the square lines. Cut this apart on the square lines and then on the diagonal lines between the rows of stitching. This will give you eight half square. Press seams towards the darker fabrics. Trim to 2-1/2" if needed...



Piece two Churn Dash units as shown at left, using scant 1/4" seams and alternating pressing directions by row...on to [Page 2!](#)

□ Jan 15 2002 Marcia Hohn

Traditional Block



pattern from <http://www.quilterscache.com>

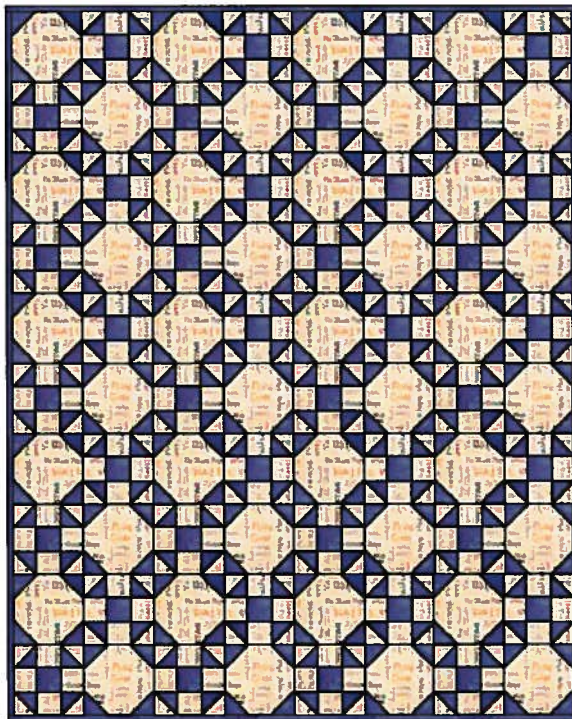
Snow Churn - Page 2



To make the two Snowball units...place the small Color 1 squares lined up with the corners of the larger Color 2 squares (again, I show them staggered just for demo purposes), and draw in the diagonals on the backs of the small squares. Sew ON these marked lines. Cut off the excess seam allowances, and press the remainder towards the outer triangles...



Now just piece the blocks as shown at left, and you've mastered another block! :o) Great Job!!



Here's a nice and simple quilt, made from four blocks by five, with just a binding around it :o)

Happy Quilting!!

Marcia :o)

Page 1

Here's one made by Dorothy!

...and here's Mary's!

Kave's!

**** Supplies List ****



Color 1 Color 1 needs: one 5" x 12-1/2" strip AND one 2-7/8" x 11-1/2" strip



Color 2 Color 2 needs: one 5" x 10" strip AND one 6-1/2" x 13" strip AND one 2-7/8" x 11-1/2" strip

To the Patterns or The Quilter's Cache

□ Jan 15 2002 Marcia Hohn



Traditional Block

pattern from <http://www.quilterscache.com>