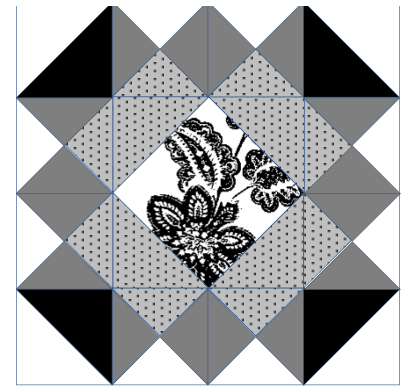


June 2014 Block of the Month – Bricks

Instructions make two 10 1/2" blocks (10" finished)



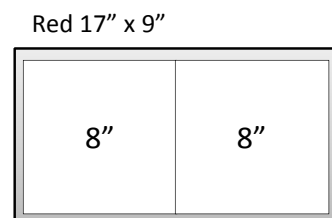
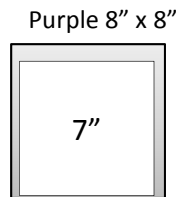
Your kit should include:

- One Purple 8" x 8" square
- One Red 17" x 9" rectangle
- One Teal 18" x 10"
- Technique Sheet for Square in a Square

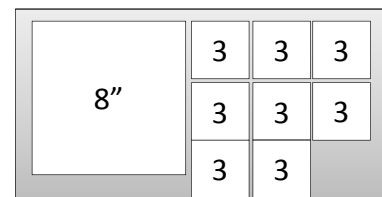
Cutting Instructions:

Focal	Two 5 1/2" squares
Cream	One 7" square One 8" square
Purple	One 7" square
Red	Two 8" squares
Teal	Eight 3" squares One 8" square

See Yearly Focal & Cream Cutting Diagrams

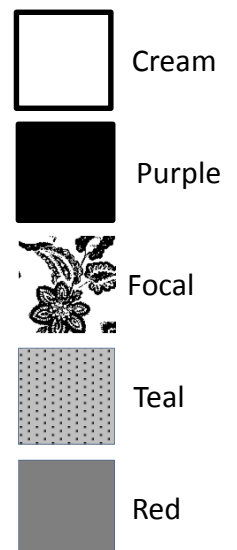
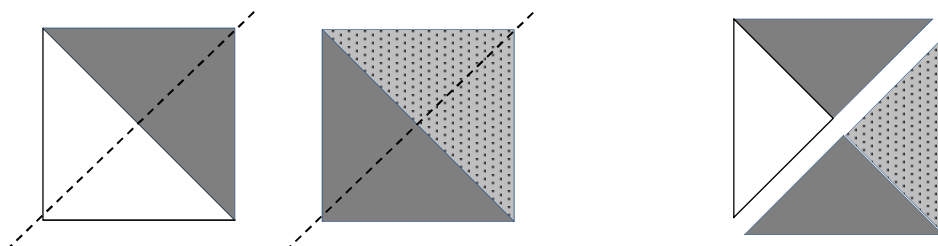


Teal 18" x 10"



1. Make Eight Cream & Purple HST
 - Follow the HST technique sheet
 - Use cream & purple 7" squares
 - Press toward purple
 - Square up HST to 3"

2. Make Sixteen Red, Cream & Teal Quarter Square Triangle Units
 - Follow the HST technique sheet to make eight cream/red HST
 - Use one cream & one red 8" squares
 - Press toward red
 - Square up HST to 3 1/2"
 - Repeat with teal & remaining red 8" square—also pressing toward the red
 - Cut HST in half on the diagonal
 - Match cream/red triangles to teal/red triangles as shown below, nest seams and stitch together with scant 1/4" seams
 - Trim to 3"



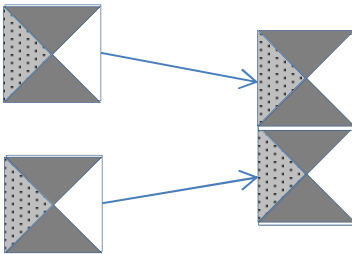
June 2014 Block of the Month – Page 2

3. Make Center Square-in-a-Square

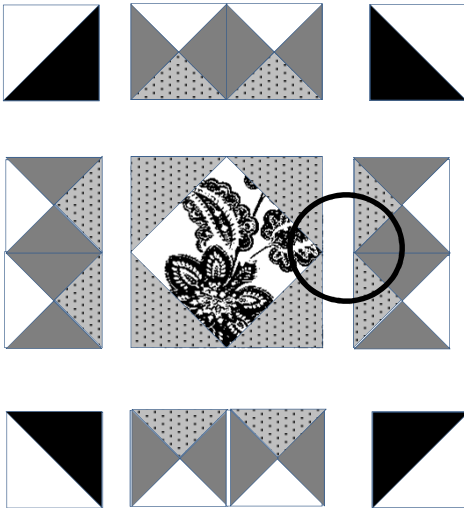
- Follow the Square-in-a-Square technique sheet
- Use 5 ½" focal squares and 3" teal squares

Assemble Blocks:

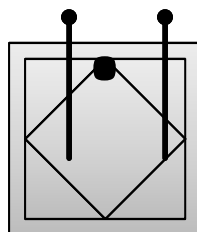
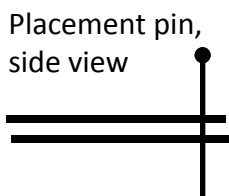
Sew eight of the QST together in pairs & press to one side.



Sew rows 1-3 as shown (see tips)



Join rows 1-3 together & press seams open



Tips Where Bulky Seams Come Together at Points (see large circle):

- ❖ Use placement pins to align the two points (see diagrams at bottom of page)
 - Stick a pin vertically through the exact point on each piece
 - While holding this placement pin straight up, pin on either side to hold pieces together
- ❖ Press seams open to avoid bulk.

