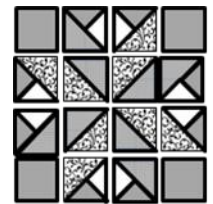


FEBRUARY 2014 BLOCK OF THE MONTH

Pinwheel Sawtooth

12-½" (12" Finished)



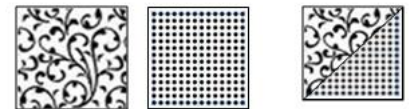
Blue Batik Background Fabric.....	8 ea	3 ½" Squares
Blue Batik Background Fabric	8 ea	4 ½" Squares
Focal Fabric.....	8 ea	4" Squares
Orange Fabric.....	8 ea	4" Squares
Red Accent Fabric.....	4 ea	4 ½" Squares

NOTE: Coloring the drawings will be helpful.

(1) Make 8 HST's – Focal/ Orange

Use **only 4** of the 4" Squares of **Focal** fabric and **Orange** fabric,

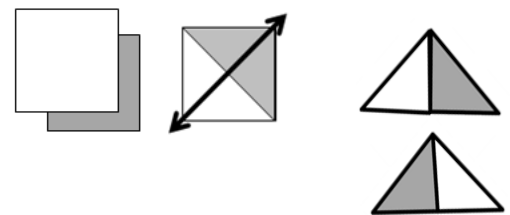
- Make 8 ea HST's
- Press towards **Focal** fabric
- Square up HST's to 3 ½"



(2) MAKE 8 HST's Blue Batik/Red

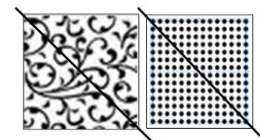
Make 8 ea HST's from 4-½" **Blue Batik** and 4- ½" **Red** fabric

- Press 4 towards **Blue Batik**
- Press 4 towards **Red** fabric
- Square up HST's to 4"
- Cut in half on the diagonal (16 half units)
- Separate into two stacks



(3) Cut 4" Squares on The Diagonal – Focal and Orange

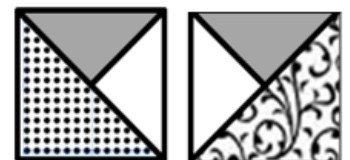
- Cut 4 each 4" **Focal** fabric on the diagonal (8 halves)
- Cut 4 each 4" **Orange** Fabric on the diagonal (8 halves)
- Use in Step 4



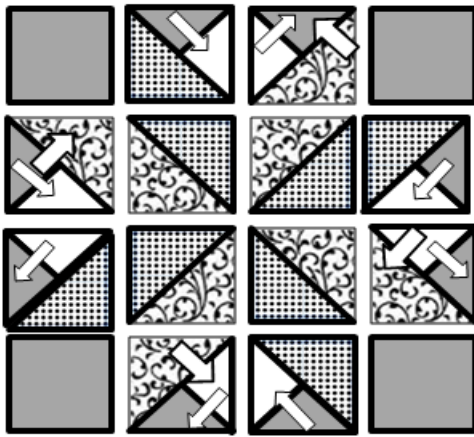
(4) Add Focal and Orange 'Halves' to Blue Batik/Red 'Half Units'

Refer to layout at right for correct color placement

- Add 'half' units from Step 3 to half units from step 2
- **Note placement of Blue/Red and Red/Blue**
- **Focal** – Press 4 towards **Focal** and 4 ea to **Red/Blue** half
- **Orange** – Press all 8 to **Orange** half
- Square up to 3½". TRICKY! Be careful.



CONTINUED ON NEXT PAGE.....



(5) ASSEMBLE and Sew Both BLOCKS

- Lay out units as shown
- Watch pressing arrows
- Sew and press rows 1 and 3 to right
- Sew and press rows 2 and 4 to left
- Join and press rows 1-2 press up
- Join and press rows 2-3 press down
- Join center seam, press open

